

**STANDARD QUARTER CORNER ON THE SOUTH LINE OF SECTION 33,  
TOWNSHIP 4 NORTH, RANGE 10 WEST, WILLAMETTE MERIDIAN,  
CLATSOP COUNTY, OREGON**

**HISTORY:**

*Italic = author's notes*

**Record No. 1** April 15, 1892 – Manius Buchanan, GLO Deputy Surveyor with D.S. Boyakin, Charles L. Koelsche, Thomas Mitchell, William H. Bush, Frank Steinhauer and Edward Ellis in his Contract No. 584 of the exterior lines of Township 4 North, Range 10 West: "From the Cor. to Secs. 33, 34, 3&4. I run N89°32'W. on true line bet Secs. 4&33 Var. 20°01'E Var. decreased by local attraction 1°12' ...35.00 (*chains*) Brook- Course S. among rocks. 40.00 On a rocky point set Post 4ft. long 3 ins. square. 24 ins. in ground for 1/4 Sec. Cor. marked 1/4 S. on N. face from which a Larch 36 ins. diam. bears N.56°E. 24 lks. (*15.8 feet*) dist. marked 1/4 S. B.T. and a hemlock 24 ins. diam. bears S.14°W. 20 lks. (*13.2 feet*) dist. marked 1/4 S. B.T. 48.00 Foot of steep bluff - ascend..."

**Record No. 2** October 25, 1955 – Weed, Shaw, Crown Zellerbach Field Crew: "Standard 1/4 Cor. Sec. 33, T4N R10W - Set 4" x 4" Hem. post for cor. B.T.'s 36" Hem. bears N52°E 17.8 ft.; scribe visible. 28" Hem. snag bears S12°W, 9.5 ft.; scribe visible." (CS# BT-241-7, Clatsop County Survey Records)

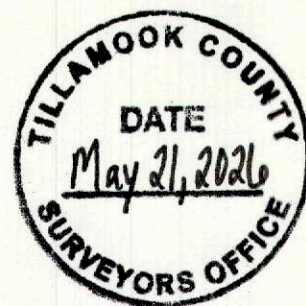
**Record No. 3** June 7, 1962 – W.A. Markham, PE 1842 in rewitness report: "South 1/4 corner, Sec. 33, T4N, R10W. Notice of rewitness. The first government survey made the corners common to Sections 33 T4N, R10W, and Section 4, T3N. The later survey made double corners, and designated this corner as the 1/4 to section 33 only. The corner for Section 4 is not to be found. (*-No record of the GLO setting a North 1/4 Corner of Section 4 has been found to exist.*) The notes call for this to be a stake for corner, with Bearing Trees: Larch 36" N 56\* E 24 links. Hemlock 24" S 14\* W 20 links. Both of these trees are still standing, with all the marks plain; but they are very dead, and liable to be obliterated by logging; therefore, I made additional witnesses: Star drilled a 3/4" hole 2" deep in a rock outcrop about 7 feet east of a stream flowing south; in the hole drove a 1/2" galvanized pipe 14" long; yellow paint on pipe and rock. Pipe bears from the corner N 80 1/2\* E 79.0 feet. Star drilled a 3/4" hole 2" deep in the sharp ridge top of a rock outcrop; drove in a 1/2" galvanized pipe 14" long; yellow paint on pipe and rock; pipe bears from the corner S 51 1/2\* W 38.25 feet. On a live hemlock 36" diameter, bears S 78\* E 25.5 feet, scribed: "1/4 S 33 BT 1842" At the point for the actual corner, placed a 3/4" galvanized pipe, 4 feet long, 2 feet in ground; painted yellow. Done June 7, 1962, in the presence of D.T. Callahan." (CS# BT- 271-2, Clatsop County Survey Records)

June 7, 1962 – Dean Callahan Crown Zellerbach Field Crew: "On June 7, 1962, I (Dean Callahan) accompanied Mr. Markham to the Short Sands Area Mainline - Spur 24 Junction. We hiked to 1/4 S. 33 where we fixed two pipes in rock outcroppings to help preserve the location of this corner. Notes which I took at the time are as follows:

REGISTERED  
PROFESSIONAL  
LAND SURVEYOR

*VANCE SWENSON*  
OREGON  
JULY 09, 2001  
VANCE S. SWENSON  
65703 LS

RENEWS 07-01-2026



From a 1" dia. x 4 ft. pipe marking 1/4 S. 33 - bears:

1 yellow - painted 3/4" pipe in point of a rock ridge, S51 1/2°W - 38.25 ft.

2 yellow - painted 3/4" pipe in large boulder on east side of stream; N80 1/2°E - 79.00 ft.

3 New 36" Hemlock B.T. S78°E 25.5 ft. to aluminum nail in face, scribed by W.A.

Markham, 1842 - 1/4 S33 B.T. in addition to original B.T.'s one of which is in very poor condition, and the other is a snag."

(Crown Zellerbach Loose Leaf Field Book 21, Pages 8&9, Clatsop County Survey Records)

**Record No. 4** March 24, 1964 – T.A. W.S., Crown Zellerbach Field Crew:

"S.1/4 Sec 33 4N 10W see LLB 21, P9

1" x 3' Gal Pipe Post, 2 BT's Tags, Cruiser Marks CLB 4S-6

H 38" 4 S76°E 25.6' Scribed

SF 38" 33 N48°E 18.1' Snag - Scribed

Creek 60 Ft. East of corner.

77.2 Ft. East of corner a 1/2" x 1 Ft. pipe driven vertically into large rock. Pipe is painted yellow.

Markham is scribed on post."

(Crown Zellerbach Loose Leaf Field Book 34, Page 3, Clatsop County Survey Records)

**Record No. 5** November 19, 2013 – Chris Butler, LS 86894 in survey for Longview Timberlands, LLC and Stimson Lumber Co.:

"S 1/4 corner Section 33-T4N-R10W (SC) (found corner)

Corner history

GLO (Buchanan 1891): Set post on a rocky point and established the following accessories:

- 36" larch N56°E 15.84'
- 24" hemlock S14°W 13.20'

W.A. Markham PE 1842 (CS# BT-271-2) (1962)

Found both original bearing trees noting that "both of these trees are still standing, with all the marks plain; but they are very dead, and liable to be obliterated by logging". Markham established a 3/4" galvanized pipe, 4 feet long with 2 feet in the ground at the true corner position and established the following accessories:

- 1/2" galvanized pipe set in drilled hole in rock outcrop N80 1/2°E 79.0'
- 1/2" galvanized pipe set in drilled hole in rock outcrop S51 1/2°W 38.25'
- 36" hemlock S78°E 25.50'

Found evidence (2013)

This Survey found the 3/4" galvanized pipe established by Markham buried 1.0' and badly bent and the following accessory:

- 35" hemlock stump, 4' tall with visible scribe S80°E 26.84' to face (Markham)

Straightened the found pipe and reset it at the point of rotation. Set a yellow plastic cap LS 86894 inside said pipe and established the following accessories:

- 10" hemlock scribed [1/4 S 33 BT] N88°W 20.38'
- 14" hemlock scribed [1/4 S 33 BT] N38°W 25.35'
- Steel T-post 1.0' North of said pipe"

(CS# 12931, Clatsop County Survey Records)

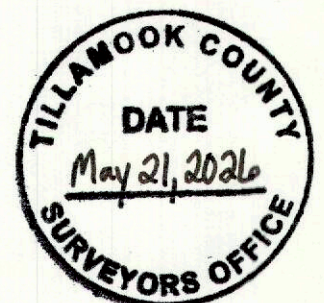
**EVIDENCE – MONUMENTION.**

On April 9, 2026 we found the Record No. 1 36" Larch bearing tree, now an intact 36" stump of badly rotted wood, with no worked face or scribes visible. We also found the Record No. 1 24" Hemlock bearing tree, now a badly rotted stump tilted Northeasterly to nearly flat with extremely steep hillside, with remains of axe work on the northerly face, but no scribes.

REGISTERED  
PROFESSIONAL  
LAND SURVEYOR

*VANCE SWENSON*  
OREGON  
JULY 09, 2001  
VANCE S. SWENSON  
65703 LS

RENEWS 07-01-2026



**Analysis:**

I determined that Manius Buchanan's crew in Record No. 1 measured to the face of their bearing trees and not the center; I evaluated the description of Karl Foeste's corner restoration in CS# BT-754, Clatsop County Survey Records in which he found Buchanan's 14" Hemlock corner tree at the Quarter Corner Common to Sections 6 and 7, T4N, R10W, and his 45" Spruce bearing tree stump. Foeste measured the same distance as Buchanan's distance from the center of the corner tree to the face of the bearing tree stump, not the center. I also evaluated Buchanan's notes for the Section Corner Common to Sections 22, 23, 26 & 27, T4N R10W, and read a distance of 3 links (2.0 feet) to a 60" diameter Cedar bearing tree, making only the distance to its face physically possible.

Therefore, at the Record No. 1 bearing and distance of S56°W 15.8 feet from the face (17.3 feet from the center) of the found 36" Larch stump, we set a 2" x 30" galvanized iron pipe with a flared bottom and a 3-1/4" brass cap stamped "Clatsop County Surveyor SC T4N R10W 1/4 S33 LS 65703 2026" flush with ground in concrete and rocks. No subsurface monument was set due to bedrock at approximately 36" depth.

**REFERENCES FOUND:**

A rotted 36" Larch stump N56°E 15.8 feet to its face, with no discernable marks. Reported as set in Record No. 1 at N56°E 24 links (15.8 feet).

A rotted 36" Hemlock stump S74°E 26.2 feet to its painted face, with scribes no longer visible. Reported as set in Record No. 3 at S78°E 25.5 feet to a nail in its face. *The calculated position of a point at the GLO bearing and distance from the center of the Record No. 1 Larch bearing tree is 25.5 feet from the face of this stump.*

A rotted 24" Hemlock stump, tilted Northeasterly to nearly flat with extremely steep hillside, S02°E 13.1 feet to approximated upright position of face, with found axe work and no scribes. Reported as set in Record No. 1 at S14°W 20 links (13.2 feet).

A 3/4" iron pipe with a yellow plastic cap in center stamped "LS 36792 86894 PLS", top 12" above ground, S17°32'W 2.64 feet. Reported as originally set "at the point for the actual corner" in Record No. 3 when both original bearing trees were still standing. Reported as found buried and badly bent, straightened, and reset "at the point of rotation" in Record No. 5. *The Record No. 5 point of rotation of this pipe doesn't match the distances to the Record No. 1 original bearing tree stumps and doesn't match the distance to the Record No. 3 bearing tree stump.*

A 12" Hemlock S82°W 21.0 feet to nearly healed face, with yellow metal location tag. Reported as set in Record No. 5 at N88°W 20.38 feet from the 3/4" iron pipe to center. We measure S89°W 20.0 from the 3/4" iron pipe to the healed face of the tree.

A 20" Hemlock N45-1/2°W 23.2 feet to nearly healed face, with yellow metal location tag. Reported as set in Record No. 5 at N38°W 25.35 feet from the 3/4" iron pipe to center. We measure N40°W 24.5 feet from the 3/4" iron pipe to the healed face of the tree.

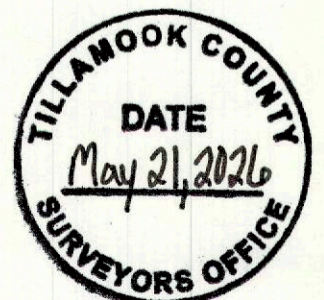
A metal "T" post painted blue per Record No. 5, S60°W 1.4 feet.

We searched for and didn't find the two iron pipes set for references in Record No. 3.

REGISTERED  
PROFESSIONAL  
LAND SURVEYOR

VANCE SWENSON  
OREGON  
JULY 09, 2001  
VANCE S. SWENSON  
65703 LS

RENEWS 07-01-2026



REFERENCES SET:

A 27" Silver Fir N64°51'E 49.24 feet to a 3/4" brass washer stamped "LS 65703" nailed to face scribed "1/4 S33 SC BT", with metal location tag.

A 5/8" x 30" iron rod with a 2" aluminum cap stamped "Clatsop County Surveyor RM" flush ground S47°19'19"E 88.43 feet.

An orange carsonite post North 1.0 feet.

Location is in timber on extremely steep and rocky hillside aspect South, and West approximately 60 feet from small creek bed running South.

**Basis of Bearings:** *Listed bearings are Geodetic. Listed distances are ground. Bearings were derived from two nearby control points. State Plane coordinates were determined by GNSS observations using the Oregon Real Time Network on these control points on April 2, 2026. State Plane coordinates were established on the Quarter Corner by field traverse from these control points.*

**STATE PLANE COORDINATES NAD 83[2011](EPOCH 2010) OREGON NORTH ZONE (3601) INT. FEET:**

Standard Quarter Corner on the South Line of Section 33, Township 4 North, Range 10 West, W.M.:

NORTHING: 789971.10 EASTING: 7331078.15  
LAT: 45°46'58.6437" LONG: -123°54'54.4443"  
CONVERGENCE ANGLE: -2°25'19" COMBINED SCALE FACTOR: 0.99985890

County Surveyor Field Book 46, page 64, Clatsop County Survey Records.

Present: Vance Swenson, PLS 65703, County Surveyor  
Michael Morrow, County Engineering Technician

Survey for Clatsop County by:

Vance S. Swenson, PLS 65703  
1100 Olney Avenue  
Astoria, OR 97103  
Clatsop County Surveyor

REGISTERED  
PROFESSIONAL  
LAND SURVEYOR

*VANCE SWENSON*  
OREGON  
JULY 09, 2001  
VANCE S. SWENSON  
65703 LS

RENEWS 07-01-2026

